



DLF1000m Fiber Laser Printer

DLF 100 W FIBER laser printer adopts intelligent vector control algorithm, marking speed greatly improved. Low maintenance, no consumables, and high-quality printing features. With an optimized marking font library, it can print permanent and high-contrast marks on flexible packaging, hard plastics (PE/PP), metals and other materials. Commonly used in food, cosmetics and other industries to ensure product traceability at the same time.



High Stability

- Brand-new intelligent control algorithm, ensures high quality printing;
- Anti-electromagnetic interference design; 24 hours of continuous operation.



Easy Integration

- Compact size, easy integration onto various packaging lines, and suitable for narrow installation space;
- Friendly user interface, convenient operation.



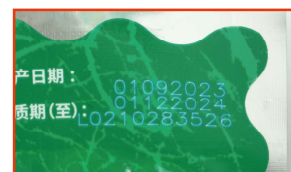
High Efficiency

- Up to 1000 CPS;
- Can print almost all fonts, barcodes, QR codes, images and graphics; Widely used in films, metals, plastic materials, etc.



Cost Effective

- Efficient fan cooling design for low maintenance and long life
- MTBF up to 100,000 hours;
- No consumables to save operation costs;
- Permanent identification to protect brand and make products traceable.



SHANGHAI DIKAI CODING TECHNOLOGY CO., LTD.

Add: Building No.1, SCI-TECH ONE, No. 489 Wenchuan Road,
Baoshan District, Shanghai 201906, PRC
Website: www.dkcoding.net
Email: info@dkcoding.net

LinkedIn

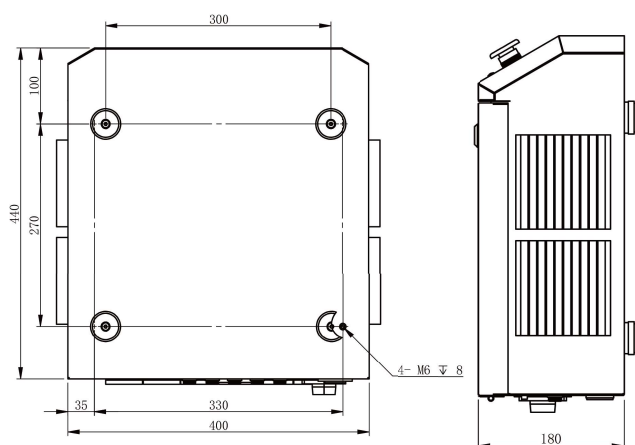
YouTube



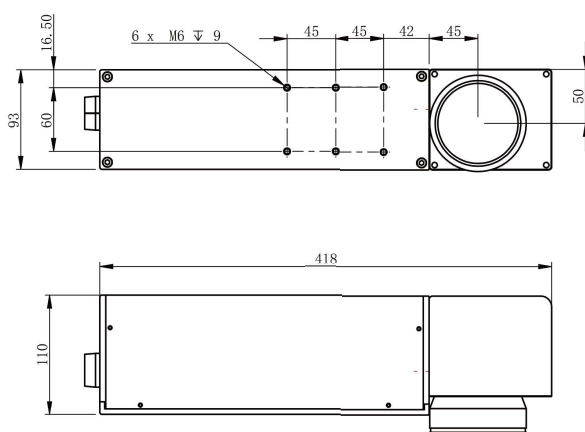
Technical Parameter

DLF1000m	
Application	
Soft-packaging, PP, Metal, etc.	
Scan Mode	
X & Y axial simultaneous scan	
Marking Laser	Type
	Fiber laser generator
	Wavelength
1064 nm	
Output	
100 W	
Guide Laser	
Red light positioning	
Marking Area/Focal Distance (mm)	
70×70/107, 110×110/187, 150×150/245, 175×175/272, 200×200/324, 250×250/414, 300×300/465	
Scan Speed	
10000 mm/s	
Software Control	
Linux system, 10-inch touch screen	
Character Type	Fonts
	Single/Double font, Dot-matrix font
	Bar Code
	Code39/Code25/EAN-13/Code128, etc.
QR Code	
PDF147/QRCODE/DATAMATRIX	
Graphic	
DXF/PLT format vector image input/output	
Marking Status	
Operation, Ready, Error status	
Character Size	
0.1 mm-Max. marking area	
Input/Output	
Two-way input/Three-way output, can be customized.	
Connection	
SD card/USB 2.0/Communication interface	
Installation Direction	
Arbitrary direction	
Cooling	
Air cooling	
Power Supply	
110/220 V; 50-60 Hz	
Power	
1000 W	
Temp.	
0-40 °C	
Humidity	
10 % ~ 90 %, non-condensation	
IP Rate	
IP54	
Dimension	
Controller 400×440×180 mm; Laser printer: 418×93×110 mm	

Dimension (mm)



Controller



Laser Printer