



PRODUCT CATALOG

• Metal Detector • Checkweigher • X-Ray Inspection System • Optical Sorting System



Contents

Company Introduction

Metal Detector

- 05 Conveyor Belt Metal Detector
- 06 High Configuration Conveyor Belt Metal Detector
- 07 Metal Detector for Biscuits
- 08 Gravity Fall Metal Detector
- 09 Metal Detector for Pharmacy
- 10 Metal Detector for Sauce

Checkweigher System

- 13 Checkweigher for Small Packages
- 14 Checkweigher for Large Packages
- 15 High-speed Checkweigher
- 16 High-precision High-speed Checkweigher
- 17 Combo Metal Detector and Checkweigher
- 18 Multi-sorting Checkweigher

X-Ray Inspection System

- 21 Smart X-Ray Inspection System
- 22 Standard X-Ray Inspection System
- 23 High Configuration X-Ray Inspection System for Bulk Products
- 24 Combo X-Ray & Visual Inspection System
- 25 X-Ray Inspection System for Sealing, Stuffing and Leakage
- 26 Economical X-Ray Inspection System for Large Packages
- 27 Dual Energy X-Ray Inspection System
- 28 X-Ray Inspection System for Residual Bone Fragments
- 29 X-Ray Inspection System for Fat Content Analysis
- 30 Photon-Counting X-Ray Inspection System
- 31 X-Ray Inspection System for Fish Bones
- 32 Single Beam X-Ray Inspection System for Bottles, Jars and Cans (Inclined Downward)
- 33 Single Beam X-Ray Inspection System for Bottles, Jars and Cans (Inclined Upward)
- 34 Split Triple Beam X-Ray Inspection System for Bottles, Jars and Cans
- 35 Dual-beam X-Ray Inspection System for Bottles, Jars and Cans
- 36 Triple-beam X-Ray Inspection System for Bottles, Jars and Cans
- 37 Quad Beam X-Ray Inspection System for Bottles, Jars and Cans
- 38 Five Beam X-Ray Inspection System for Bottles, Jars and Cans
- 39 X-Ray Inspection System for Sauce and Liquid

Vision Inspection System

- 42 Inkjet Character Defect Detection System
- 43 Double/Multi-Sided Vision Inspection System

Optical Sorting System

- 46 UHD Intelligent Medium Speed Optical Sorter
- 47 UHD Intelligent Multi Beam Optical Sorter
- 48 UHD Intelligent Long Distance Optical Sorter
- 49 Double Layer Intelligent UHD Long Distance Optical Sorter
- 50 UHD Intelligent Top View Optical Sorter
- 51 Multi Functional Color Sorter
- 52 Mini Color Sorter
- 53 Farm Products Optical Sorter

Rejecter Series





Company Introduction

Techik Instrument (Shanghai) Co., Ltd is a leading manufacturer specializing in X-Ray inspection systems, metal detectors, checkweighers and optical sorting systems, with proprietary intellectual property rights. Techik designs and delivers state-of-the-art products and solutions that meet global standards for performance and quality.

Our products fully comply with CE, ISO 9001, ISO 14001 management systems, and OHSAS 18001 standards, ensuring the highest levels of confidence and reliability. With extensive experience and technological expertise in X-Ray inspection, metal detector, checkweigher and optical sorting, Techik is committed to addressing every customer's needs through technological excellence, robust design, and continuous improvement in quality and service. Our mission is to provide unparalleled safety and reliability under the philosophy of "Safe with Techik."



DETECTING | WEIGHING | INSPECTION | SORTING

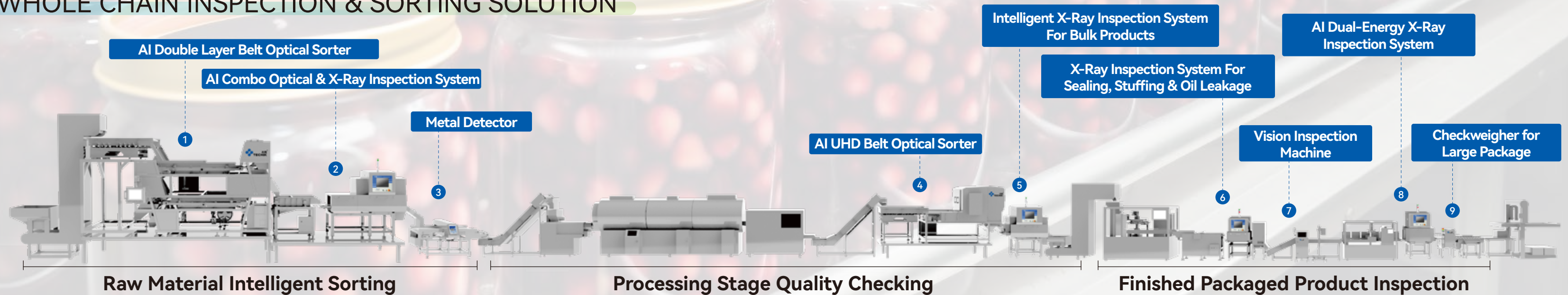
Driven by AI innovation, Techik provides customers with whole chain inspection and sorting solutions in industries such as food and agricultural products, with technologies of multi-spectrum, multi-energy spectrum, and multi-sensor.

Raw material sorting and grading: sorting for color, shape, defect, material and foreign contaminant.

Processing stage quality checking: inspection of foreign contaminant, weight and quality.

Packaged product inspection: inspection of foreign contaminant, weight, quality and sealing.

WHOLE CHAIN INSPECTION & SORTING SOLUTION



Metal Detector

The first DSP metal detector with Intellectual Property Rights in China, suitable for metal contaminants detection in various industries like: aquatic products, meat & poultry, salted products, pastry, nuts, vegetables, chemical raw materials, pharmacy, cosmetics, toys, etc.



Bearing



Green button



Alarm light



Shaft



Inverter



Motor



Relay



Photo tube

Metal Detector IMD Series

Detecting all metal contaminants in packaged and non-packaged food, including ferrous metal (Fe), non-ferrous metals (Copper, Aluminum etc.) and stainless steel.

Stable and High Sensitivity

- Special phase adjusting technology
- High sensitivity with stable performance
- Auto balance function



High Configuration

- Touch screen
- USB port
- Dual-frequency
- Customized rejecter system
- Different surface treatment



User-friendly Function

- Multi languages
- Customization
- Large memory capacity



Auto-learning Function

- Auto-learning product character
- Finish auto-learning process very soon





Conveyor Belt Metal Detector

Model		IMD		
Specifications		4008,4012 4015,4018	5020,5025 5030,5035	6025,6030
Detection Width		400mm	500mm	600mm
Detection Height		80mm-350mm		
Sensitivity	Fe	Φ0.5-1.5mm		
	SUS304	Φ1.0-3.5mm		
Belt Width		360mm	460mm	560mm
Loading Capacity		30kg-50kg		
Display Mode		LCD display panel (FDM touch screen optional)		
Operation Mode		Button input (Touch input optional)		
Product Storage Quantity		52 kinds (100 kinds with touch screen)		
Conveyor Belt		Food Grade PU(chain conveyor optional)		
Belt Speed		Fixed 25m/min (Variable speed optional)		
Rejecter Mode		Alarm and belt stop (Rejecter optional)		
Power Supply		AC220V (Optional)		
Main Material		SUS304		
Surface Treatment		Brushed SUS, Mirror polished, Sand blasted		

Note:
1. The technical parameter above namely is the result of sensitivity by detecting only the test sample on the belt. The concrete sensitivity would be affected according to the products being detected, working condition and speed.
2. Requirements for different sizes by customers can be fulfilled.

High Configuration Conveyor Belt Metal Detector

- Frequency-selecting function, two frequencies can be chosen to match different products
- Dual-detection system ensures Fe and Sus achieve its best sensitivity
- Auto-balance function ensures stable detection

Model		IMD-H		
Specifications		4008,4012 4015,4018	5020,5025 5030,5035	6025,6030
Detection Width		400mm	500mm	600mm
Detection Height		80mm,120mm	200mm,250mm	250mm
		150mm,180mm	300mm,350mm	300mm
Sensitivity	Fe	Φ0.5mm,Φ0.6mm	Φ0.8mm, Φ1.0mm	Φ1.2mm
		Φ0.7mm,Φ0.8mm	Φ1.2mm, Φ1.5mm	Φ1.5mm
	SUS304	Φ0.9mm,Φ1.2mm	Φ2.0mm, Φ2.5mm	Φ2.5mm
		Φ1.5mm,Φ2.0mm	Φ2.5mm, Φ3.0mm	Φ3.0mm
Belt Width		360mm	460mm	560mm
Loading Capacity		≤10kg	≤50kg	≤100kg
Display Mode		Touch screen		
Operation Mode		Touch input		
Product Storage Quantity		100 kinds		
Frequency		Dual-frequency		
Checking Channel		Double channel checking		
Belt Speed		Variable speed		
Rejecter Mode		Alarm and belt stop (Rejecter optional)		
IP Level		IP54/IP65		
Mechanical Design		Round frame, easy wash		
Surface Treatment		Brushed stainless steel, Sand blasted		

Note:
1. The technical parameter above namely is the result of sensitivity by detecting only the test sample on the belt. The concrete sensitivity would be affected according to the products being detected, working condition and speed.
2. Requirements for different sizes by customers can be fulfilled.



Metal Detector for Biscuits

With unique design of pneumatic retracting band type rejecter to prevent the product from being disordered, this type of metal detector is widely used in different biscuits and sweets production lines.



Gravity Fall Metal Detector

With compact design and small occupied space, this type of metal detector is suitable for the detection of powder, granule or other forms of bulk products.

Model		IMD-B						
Specifications		60	70	80	90	100	110	120
Detection Width		600mm	700mm	800mm	900mm	1000mm	1100mm	1200mm
Detection Height		50mm-200mm						
Sensitivity	Fe	≥Φ0.6mm						
	SUS304	≥Φ1.2mm						
Belt Width		560mm	660mm	760mm	860mm	960mm	1060mm	1160mm
Conveyor Belt		Food grade PU						
Belt Speed		15m/min (Variable speed optional)						
Rejecter Mode		Pneumatic retracting band type /Flap rejecter (Optional)						
Power Supply		AC220V (Optional)						
Main Material		SUS304						

Note:

1. The technical parameter above namely is the result of sensitivity by detecting only the test sample on the belt. The sensitivity would be affected according to the products being detected, working condition and speed.
2. Requirements for different sizes by customers can be fulfilled.

Model	IMD-P						
Detection Diameter (mm)	Detection Capacity t/h ²	Rejecter Mode	Pressure Requirement	Power Supply	Main Material	Sensitivity ¹ Φd (mm)	
						Fe	SUS
75	3	Automatic flap rejecter	≥ 0.5Mpa	AC220V (Optional)	Stainless steel (SUS304)	0.5	0.8
100	5					0.6	1.0
150	10					0.6	1.2
200	20					0.7	1.5

Note:

1. The technical parameter above namely is the result of sensitivity by detecting only the test sample inside the pipe. The sensitivity would be affected according to the products being detected and working condition.
2. Detecting capacity per hour is related with product weight, the value of the table is according to the density of water (1000kg/m3).
3. Requirements for different sizes by customers can be fulfilled.



Metal Detector for Pharmacy

High sensitivity and stability detection of ferrous metal (Fe), non-ferrous metals (Copper, Aluminum) and stainless steel, this type of machine is suitable to be installed after some pharmaceutical equipment like the tablet press machine, the capsule filling machine and the sieve machine.



Metal Detector for Sauce

Easy to be integrated in existing sealed pipe system, this type of metal detector is suitable for the pump pressure fluid and semi-fluid product like sauce, liquid, etc.

Model		IMD-50R	IMD-75R
Tube Inner Diameter		Φ50mm	Φ75mm
Sensitivity	Fe	Φ0.3mm	
	SUS304	Φ0.5mm	
Display Mode		TFT touch screen	
Operation Mode		Touch input	
Product Storage Quantity		100 kinds	
Channel Material		Food grade plexiglass	
Rejecter Mode		Automatic rejection	
Power Supply		AC220V (Optional)	
Pressure Requirement		≥0.5Mpa	
Main Material		SUS304(Product contact parts: SUS316)	

Note:

- 1. The technical parameter above namely is the result of sensitivity by detecting only the test sample inside the channel. The sensitivity would be affected according to the products being detected and working condition.
- 2. Requirements for different sizes by customers can be fulfilled.

Model	IMD-L					
Detection Diameter (mm)	Rejecter Mode	Pressure Requirement	Power Supply	Main Material	Inner Pipe Material	Sensitivity'Φd (mm)
						FeSUS
50	Automatic valve rejecter	≥0.5Mpa	AC220V (Optional)	Stainless steel (SUS304)	Food grade Teflon tube	0.51.2
63						0.61.2
80						0.71.5
100						0.81.5-2.0

Note:

- 1. The technical parameter above namely is the result of sensitivity by detecting only the test sample inside the pipe. The sensitivity would be affected according to the products being detected and working condition.
- 2. Detecting volume per hour is related with product weight and speed.
- 3. Requirements for different sizes by customers can be fulfilled.

Checkweigher System

Suitable for weight checking for packaged products, to ensure quality standards.



Alarm light



Green button



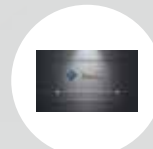
Load cell



Motor



Panasonic inverter



Touch screen



Photo tube

Checkweigher IXL Series

Suitable for weight checking for packaged products, to ensure quality standards.

- High speed, high sensitivity, high stability dynamic weight checking
- Easy to clean, simple to disassemble



1



2



3

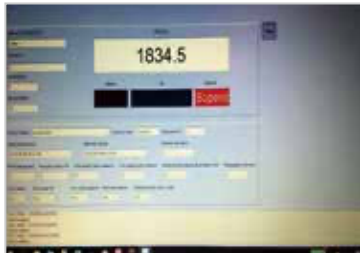
User-friendly Function

- Multi languages
- Data storage
- Large memory capacity



High Configuration

- Touch screen
- USB port, Ethernet function
- Real time monitoring on PC



Brief User Parameter Setting



Checkweigher for Small Packages



Checkweigher for Large Packages



Model		IXL-160	IXL-230S	IXL-230L	IXL-300	IXL-350	IXL-400
Detecting Range		5~600g	10~2000g	10~2000g	10~5000g	10~5000g	0.2~10kg
Scale Interval		0.05g	0.1g	0.1g	0.2g	0.2g	0.5g
Accuracy (3σ)		±0.1g	±0.2g	±0.2g	±0.5g	±0.5g	±1g
Belt Speed		70m/min	70m/min	70m/min	70m/min	70m/min	70m/min
Weighed Product Size	Width	150mm	220mm	220mm	290mm	340mm	390mm
	Length	200mm	250mm	350mm	400mm	450mm	500mm
Weigher Platform Size	Width	160mm	230mm	230mm	300mm	350mm	400mm
	Length	280mm	350mm	450mm	500mm	550mm	650mm
Operation Screen		7" touch screen					
Product Storage		100 kinds					
Segments Number		2/3					
Rejection System		Rejecter optional					
Power Supply		220V (Optional)					
IP Rating		IP54/IP65					
Main Material		Mirror polished/Sand blasted					

- Note:**
1. The technical parameter above namely is the result of accuracy by checking only the test sample on the belt. The accuracy would be affected according to the detecting speed and product weight.
 2. The detecting speed above will be affected according to the product size to be checked.
 3. Requirements for different sizes by customers can be fulfilled.

Model		IXL-500	IXL-600
Detecting Range		0.5-20kg	1~50kg
Scale Interval		1g	5g
Accuracy (3σ)		±2g	±5g
Belt Speed		40/60m/min	
Weighed Product Size	Width	490mm	590mm
	Length	650mm	1000mm
Weigher Platform Size	Width	500mm	600mm
	Length	800mm	1200mm
Operation Screen		7" touch screen	
Product Storage Quantity		100 kinds	
Segments Number		2/3	
Rejection System		Rejecter optional	
Power Supply		220V (Optional)	
IP Rating		IP54/IP65	
Main Material		Mirror polished/Sand blasted	

- Note:**
1. The technical parameter above namely is the result of accuracy by checking only the test sample on the belt. The accuracy would be affected according to the detecting speed and product weight.
 2. The detecting speed above will be affected according to the product size to be checked.
 3. Requirements for different sizes by customers can be fulfilled.

High-speed Checkweigher

- High speed, up to 120m/min.



Model		IXL-H-160	IXL-H-230S	IXL-H-230L
Detecting Range		10~600g	20~2000g	20~2000g
Accuracy (3σ)		±0.2g	±0.2g	±0.2g
Belt Speed		≤120m/min		
Weighed Product Size	Width	150mm	220mm	220mm
	Length	200mm	250mm	350mm
Weigher Platform Size	Width	160mm	230mm	230mm
	Length	280mm	350mm	450mm
Operation Screen		7” touch screen		
Product Storage Quantity		100 kinds		
Segments Number		3		
Rejection System		Rejecter optional		
Power Supply		220V (Optional)		
IP Rating		IP54		
Body Material		Mirror polished/Sand blasted		

- Note:**
1. The technical parameter above namely is the result of accuracy by checking only the test sample on the belt. The accuracy would be affected according to the detecting speed and product weight.
 2. The detecting speed above will be affected according to the product size to be checked.
 3. Requirements for different sizes by customers can be fulfilled.

High-precision High-speed Checkweigher

- High speed, up to 120m/min, Higher accuracy.



Model		IXL-100-H	IXL-150-H	IXL-220-H
Detecting Range		10~600g	10~600g	20~2000g
Scale Interval		0.01g	0.05g	0.1g
Accuracy (3σ)		±0.05g	±0.1g	±0.2g
Belt Speed		≤120m/min		
Weighed Product Size	Width	90mm	140mm	210mm
	Length	120/170mm	120/170/200mm	170/200/300/350mm
Weigher Platform Size	Width	100mm	150mm	220mm
	Length	200/250mm	200/250/300mm	250/300/400/450mm
Operation Screem		10“ touch screen		
Product Storage Quantity		999 kinds		
Segments Number		3		
Reject Mode		Rejecter Optional		
Power Supply		220V (Optional)		
IP Rating		IP54 / IP65		
Main Material		Mirror polished/Sand blasted		

- Note:**
1. The technical parameter above namely is the result of accuracy by checking only the test sample on the belt. The accuracy would be affected according to the detecting speed and product weight.
 2. The detecting speed above will be affected according to the product size to be checked.
 3. Requirements for different sizes by customers can be fulfilled.

Combo Metal Detector and Checkweigher

Widely used in workshop with compact space.



- Compact design, saving space and installation cost
- Metal detector and checkweigher is perfectly connected in one frame, to install the machine in workshop conveniently and effectively

Model		IMC-230L	IMC-300	IMC-400
Detecting Range		20~2000g	50~5000g	20~10000g
Scale Interval		0.1g	0.2g	0.5g
Accuracy (3σ)		±0.2g	±0.5g	±1g
Maximum Belt Speed		70m/min	70m/min	70m/min
Weighed Product Size	Width	220mm	290mm	390mm
	Length	350mm	400mm	500mm
Weigher Platform Size	Width	230mm	300mm	400mm
	Length	450mm	500mm	650mm
Sensitivity	Fe	Φ0.7mm		
	SUS	Φ1.5mm		
Product Storage Quantity		100 kinds		
Segments Number		3		
Rejection System		Rejecter optional		
Power Supply		AC220V (Optional)		
IP Rating		IP54/IP65		
Main Material		Mirror polished/Sand blasted		

Note:
1. The technical parameter above namely is the result of accuracy by checking only the test sample on the belt. The accuracy would be affected according to the detecting speed and product weight.
2. The detecting speed above will be affected according to the product size to be checked.
3. Requirements for different sizes by customers can be fulfilled.

Multi-sorting Checkweigher

Widely used in seafood, poultry, aquatic products, frozen products, etc.



- Replacing labor sorting, saving cost, improving efficiency and optimizing the production process
- Accurate rejector systems with multi-weight zones
- Various fast rejector systems, to satisfy rejecting unqualified products with different speed
- 9 standard weight sorting zones, 12 weight sorting zones is available

Model		IXL-SG-160	IXL-SG-230S	IXL-SG-230L	IXL- SG -300
Detecting Range		10~600g	20~2000g	20~2000g	20~5000g
Scale Interval		0.05g	0.1g	0.1g	0.2g
Accuracy (3σ)		0.4g	0.8g	0.8g	2g
Maximum Belt Speed		60m/min	60m/min	60m/min	60m/min
Weighed Product Size	Width	150mm	220mm	220mm	290mm
	Length	200mm	250mm	350mm	400mm
Weigher Platform Size	Width	160mm	230mm	230mm	300mm
	Length	280mm	350mm	450mm	500mm
Operation Screen		7" touch screen			
Product Storage Quantity		100 kinds			
Maximum Weight Range		12 levels			
Rejection System		Air Jet, Flipper, Pusher			
Power Supply		AC220V (Optional)			
IP Rating		IP54/IP65			
Main Material		Mirror polished/Sand blasted			

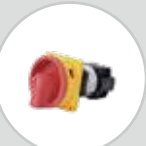
Note:
1. The technical parameter above namely is the result of accuracy by checking only the test sample on the belt. The accuracy would be affected according to the detecting speed and product weight.
2. The detecting speed above will be affected according to the product size to be checked.
3. Requirements for different sizes by customers can be fulfilled.

X-Ray Inspection System

X-Ray Inspection System takes advantages of the penetrating power of X-Ray to detect contamination. It can achieve a full range of contaminants inspection including metallic, non-metallic contaminants (glass, ceramic, stone, bone, hard rubber, hard plastic, etc.). It can inspect metallic, non-metallic packaging and canned products, and the inspection effect will not be affected by temperature, humidity, salt content, etc.



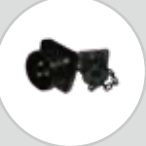
Alarm lamp



Main power switch



USB and Ethernet ports



Military connector



X-Ray generator



HD touch screen



Industrial computer



Detector



X-Ray locker



Air conditioner



Simple to Disassemble, Easy to Clean, and Reliable Security

- Good environment adaptability
- Equipped with industrial air conditioner
- Completely sealed structure to avoid dust
- Environmental humidity can reach 90%
- Environmental temperature can reach -10~40℃



Excellent Product Applicability

- Up to eight grade image processing technology to achieve the best product adaptability and stability



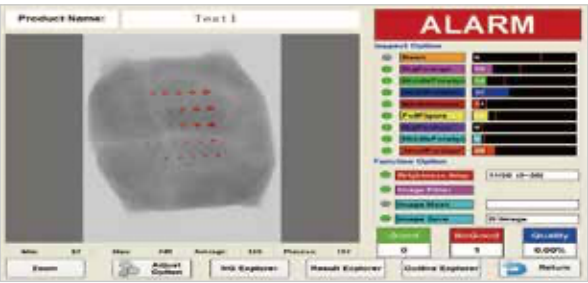
High Configuration of Hardware

- Spare parts are well-known imported brands to ensure the performance and service life of the machine



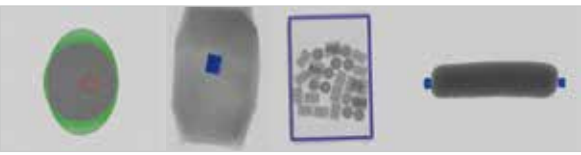
Excellent Operability

- 15-inch touch screen display, easy to operate,
- Auto-learning function. Equipment will automatically remember qualified product parameters
- Automatically save the product images, which is convenient for user's analysis and tracking



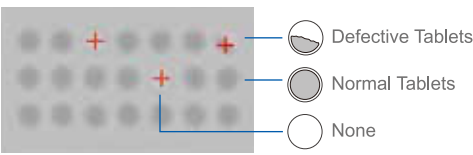
Shielding Function

- Cans shielding
- Desiccant shielding
- Boundary shielding
- Sausage aluminum buckle shielding



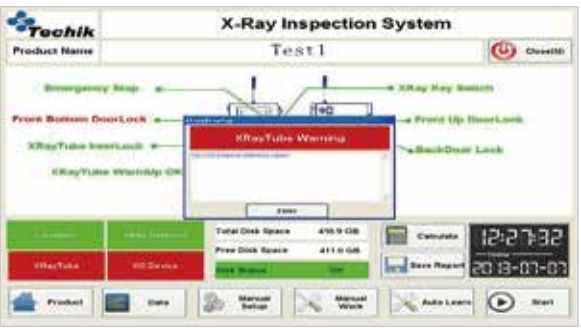
Defects Inspection Function

- The system will detect and inform tablet crack, tablet lacking, and tablet with contamination



Comprehensive and Reliable Security

- X-Ray leakage meets FDA and CE standards
- Perfect safe operation monitoring to prevent the leakage from mis-operation





Smart X-Ray Inspection System

- Competitive price
- Good sensitivity and stability

Model		TXE-2015	TXE-3015	TXE-4015
X-Ray Tube		150W/210W/350W Optional		
Inspection Width		200mm	300mm	400mm
Inspection Height		150mm		
Best Inspection Ability		Stainless steel ball Φ0.3mm Stainless steel wire Φ0.3*2mm Glass/Ceramic ball Φ1.0mm		
Conveyor Speed		10-60 m/min		
O/S		Windows		
Protection Method		Soft curtain		
X-Ray Leakage		< 1 μSv/h		
IP Rate		IP65 for tunnel		
Working Environment	Temperature	0~40℃		
	Humidity	30~90%, no dew		
Cooling Method		Industrial air conditioning		
Reject Mode		Sound and light alarm, belt stops (Rejecter optional)		
Air Pressure		0.8Mpa		
Power Supply		2 kW		
Main Material		SUS304		
Surface Treatment		Brushed SUS		

Note:

The technical parameter above namely is the result of sensitivity by inspecting only the test sample on the belt. The actual sensitivity would be affected according to the products being inspected.



Standard X-Ray Inspection System

Model	Standard TXR Series					
Standard	2480	4080	4080SH	5080SH	6080SH	8040SH
X-Ray Tube	150W/210W/350W/480W Optional					
Inspection Width	240mm	400mm	400mm	500mm	600mm	800mm
Inspection Height	160mm	160mm	300mm	300mm	300mm	400mm
Best Inspection Sensitivity	Stainless steel ball Φ0.3mm Stainless steel wire Φ0.2*2mm Glass/Ceramic ball Φ0.8mm					
Conveyor Speed	10-90m/min (10-40m/min for heavy load)					
O/S	Windows					
Protection Method	Soft curtain					
X-Ray Leakage	< 1 μSv/h (CE Standard)					
IP Rate	IP66 (Under belt)					
Working Environment	Temperature: -10~40 C					
	Humidity: 30-90%, no dew					
Cooling Method	Industrial air conditioning					
Rejecter Mode	Sound and light alarm, belt stops (Rejecter optional)					
Air Pressure	0.8Mpa					
Power Supply	2.5 kW					
Main Material	SUS304					
Surface Treatment	Mirror polished/Sand blasted					

Note:

The technical parameter above namely is the result of sensitivity by inspecting only the test sample on the belt. The actual sensitivity would be affected according to the products being inspected.

High Configuration X-Ray Inspection System for Bulk Products



- Optimized structure. With extended drive platform, the material can pass through the inspection tunnel smoothly
- Improved sensitivity. With faster CPU processing technology and big power X-Ray generator, the sensitivity has been increased
- Faster speed and mass production. With Max 120m/min belt speed, the output has been greatly improved
- With high-speed air valve and 48 air jet rejecter system, the rejecter accuracy has been increased and the quantity of waste has been decreased a lot

Model	TXR-4080GP	TXR6080GP
X-Ray Tube	210W/350W Optional	
Inspection Width	400mm	600mm
Inspection Height	100mm	
Best Inspection Sensitivity	Stainless steel ball Φ0.3mm Stainless steel wire Φ0.2*2mm Glass/Ceramic ball Φ0.8mm	
Conveyor Speed	10-120 m/min	
O/S	Windows	
Protection Method	SUS Shield	
X-Ray Leakage	< 1 μSv/h (CE Standard)	
IP Rate	IP66 (Under belt)	
Working Environment	Temperature: -10~40 C	
	Humidity:30~90% no dew	
Cooling Method	Industrial air conditioning	
Rejecter Mode	48/72/108 tunnel air jet rejecter (optional)	
Air Pressure	0.8Mpa	
Power Supply	3 kW	
Main Material	SUS304	
Surface Treatment	Mirror polished/Sand blasted	

Note:
The technical parameter above namely is the result of sensitivity by inspecting only the test sample on the belt. The actual sensitivity would be affected according to the products being inspected.

Combo X-Ray & Visual Inspection System



Not only can Combo X-Ray & Visual Inspection System effectively detect foreign objects and impurities inside the raw materials, it can also identify internal and external defects of raw materials, and accurately remove branches, leaves, paper, stones, glass, plastic, metal, wormholes, mildew, and etc.

Model	TXR-V4080GP	TXR-V6080GP
X-Ray Tube	210W/350W Optional	
Inspection Width	400mm	600mm
Inspection Heigh	100mm	100mm
Best Inspection Sensitivity	Stainless steel ball Φ0.3mm Stainless steel wire Φ0.2*2mm Glass/Ceramic ball Φ0.8mm	
Conveyor Speed	10-120m/min	
O/S	Windows	
Protection Method	≤1μSv/h (CE Standard)	
X-Ray Leakage	IP 66 under belt	
IP Rate	Temperature: -10~40 C	
Working Environment	Humidity:30~90% no dew	
Cooling Method	Industrial air conditioning	
Rejecter Mode	48/72/108 tunnel air jet rejecter (optional)	
Air Pressure	0.8Mpa	
Power Supply	3kW	
Main Material	SUS304	
Surface Treatment	Mirror polished/Sand blasted	

Note:
The technical parameter above namely is the result of sensitivity by inspecting only the test sample on the belt. The actual sensitivity would be affected according to the products being inspected.

X-Ray Inspection System for Sealing, Stuffing and Leakage

X-Ray Inspection System for Sealing, Stuffing and Leakage is expert in detecting sealing oil leakage and sealing material for the packaging material (aluminum foil, aluminized film, plastic film and other packaging). In addition, this equipment can also realize outer packaging defects visual inspection (for example: folds at the seal, crooked edge, oil stains, etc.), weight inspection.



Economical X-Ray Inspection System for Large Packages

It is specialized for the inspection of large size packages like big bags, cartons, boxes, etc.



Model	TXR-2480X	TXR-4080X	TXE-2015X	TXE-3015X	TXE-4015X
X-Ray Tube	350W				
Inspection Width	240mm	400mm	200mm	300mm	400mm
Inspection Heigh	160mm	160mm	150mm	150mm	150mm
Best Inspection Sensitivity	Stainless steel ball Φ0.3mm Stainless steel wire Φ0.2*2mm Glass/Ceramic ball Φ0.8mm				
Conveyor Speed	10-90m/min	10-90m/min	10-60m/min	10-60m/min	10-60m/min
O/S	Windows				
Protection Method	SUS Shield				
X-Ray Leakage	≤1μSv/h (CE Standard)				
IP Rate	IP66 (Under belt)				
Working Environment	Temperature: -10~40 C Humidity: 30~90%, no dew				
Cooling Method	Industrial air conditioning				
Rejecter Mode	Kinds of rejecters (optional)				
Air Pressure	0.8Mpa				
Power Supply	2.5kW				
Main Material	SUS304				
Surface Treatment	Mirror polished/Sand blasted				

Note:
The technical parameter above namely is the result of sensitivity by inspecting only the test sample on the belt. The actual sensitivity would be affected according to the products being inspected.

Model	TXR-6080XH
X-Ray Tube	210W/350W Optional
Inspection Width	650mm
Inspection Height	500mm
Best Inspection Sensitivity (Without Product)	Stainless steel ball Φ0.5mm Glass/Ceramic ball Φ1.5mm
Conveyor Speed	10~40m/min
O/S	Windows
Protection Method	Soft curtain
X-Ray Leakage	< 1 μSv/h(CE Standard)
Working Environment	Temperature:-5~40 C Humidity:40-60%, no dew
Rejecter Mode	Sound and light alarm, belt stops (Rejecter optional)
Air Pressure	0.8Mpa
Power Supply	2.5 kW
Surface Treatment	Carbon Steel

Note:
The technical parameter above namely is the result of sensitivity by inspecting only the test sample on the belt. The actual sensitivity would be affected according to the products being inspected.

Dual Energy X-Ray Inspection System

Dual energy X-Ray inspection system, equipped with TDI dual-energy high-speed and high definition detector, together with intelligent deep learning technology, can realize the dual recognition of shape and material, and effectively improve the detection effect of small foreign objects such as stones. soil clods, snail shell and rubber, as well as thin sheet foreign matter such as aluminum, glass and PVC.



X-Ray Inspection System for Residual Bone Fragments

Suitable for in-line inspection of the residual bone fragments in meat processing, for instance, inspecting residual collarbones, shoulder blades in chicken.

- Compared with traditional single-energy inspection, the TXR-BDE series applies to dual-energy X-Ray inspection technology, achieving higher sensitivity and inspection rate.
- TXR-BDE series can identify cartilage and ignore the product effect of irregular shape.



Model	TXR-2480DE	TXR-4080DE
X-Ray Tube	350W	
Inspection Width	240mm	400mm
Inspection Heigh	160mm	160mm
Best Inspection Sensitivity	Stainless steel ball Φ0.3mm Stainless steel wire Φ0.2*2mm Glass/Ceramic ball Φ0.8mm	
Conveyor Speed	10-90m/min	10-90m/min
O/S	Windows	
Protection Method	SUS Shield	
X-Ray Leakage	≤1μSv/h (CE Standard)	
IP Rate	IP66 (Under belt)	
Working Environment	Temperature: -10~40 C Humidity:30~90% no dew	
Cooling Method	Industrial air conditioning	
Rejecter Mode	Kinds of rejecters (optional)	
Air Pressure	0.8Mpa	
Power Supply	2.5kW	
Main Material	SUS304	
Surface Treatment	Mirror polished/Sand blasted	

Note:
The technical parameter above namely is the result of sensitivity by inspecting only the test sample on the belt. The actual sensitivity would be affected according to the products being inspected.

Model	TXR-4080BDE
X-Ray Tube	350W
Inspection Width	400mm
Inspection Height	160mm
Best Inspection Sensitivity	Stainless steel ball Φ0.3mm Stainless steel wire Φ0.2*2mm Glass/Ceramic ball Φ0.8mm
Conveyor Speed	10-60m/min
O/S	Windows
Protection Method	Soft curtain
X-Ray Leakage	< 1 μSv/h (CE Standard)
IP Rate	IP66 (Under belt)/IP69K
Working Environment	Temperature: -10~40 C
	Humidity:30~90%, no dew
Cooling Method	Industrial air conditioning
Rejecter Mode	Sound and light alarm, belt stops (Rejecter optional)
Air Pressure	0.8Mpa
Power Supply	3kW
Main Material	SUS304
Surface Treatment	Mirror polished/Sand blasted

Note:
The technical parameter above namely is the result of sensitivity by inspecting only the test sample on the belt. The actual sensitivity would be affected according to the products being inspected.

X-Ray Inspection System for Fat Content Analysis

Fat analysis and bone detection for for all cuts of meat, bulk ground meat and packed meat (cartons, plastic trays, etc.). Available for fresh and frozen products.



Photon-Counting X-Ray Inspection System

Widely used to check tiny bones



Model	TXR-4080FA	TXR-6080FA	TXR-8040FA
X-Ray Tube	350W/100	500W/140	
Inspection Width	400mm	600mm	800mm
Inspection Height	160mm	300mm	400mm
Best Inspection Sensitivity	Stainless steel ball φ0.3mm Stainless steel wire Φ0.2*2mm Glass/Ceramic ball φ0.8mm	Stainless steel ball φ0.4mm Stainless steel wire Φ0.3*2mm Glass/Ceramic ball φ1.0mm	
Conveyor Speed	10~60m/min		
O/S	Windows		
Protection Method	Protection Tunnel		
X-Ray Leakage	< 1 μSv/h		
IP Rate	IP67/IP69K		
Working Environment	Temperature: 0~40℃		
	Humidity: 30-90% , no dew		
Cooling Method	Industrial air conditioning		
Rejecter Mode	Sound and light alarm, belt stop (Rejecter optional)		
Air Pressure	0.8 Mpa		
Power Supply	3 kW		
Main Material	SUS 304		
Surface Treatment	Mirror polished/Sand blasted		

Note:
The technical parameter above namely is the result of sensitivity by inspecting only the test sample on the belt. The actual sensitivity would be affected according to the products being inspected.

Model	TXR-2080PC	TXR-4080PC
X-Ray Tube	500W	
Inspection Width	200mm	400mm
Inspection Height	100mm	100mm
Best Inspection Sensitivity	Stainless steel ball φ0.2mm Stainless steel wire Φ0.2*2mm (Auto Alarm) Glass/Ceramic ball φ0.8mm	
Conveyor Speed	10~40m/min	
O/S	Windows	
Protection Method	Protection Tunnel	
X-Ray Leakage	< 1 μSv/h	
IP Rate	IP69K	
Working Environment	Temperature: -10~40°C	
	Humidity: 30~90% , no dew	
Cooling Method	Industrial air conditioning	
Rejecter Mode	Sound and light alarm, belt stop (Rejecter optional)	
Air Pressure	0.8 Mpa	
Power Supply	3 kW	
Main Material	SUS 304	
Surface Treatment	Mirror polished/Sand blasted	

Note:
The technical parameter above namely is the result of sensitivity by inspecting only the test sample on the belt. The actual sensitivity would be affected according to the products being inspected.

X-Ray Inspection System for Fish Bones

- TDI camera, high resolution, tiny fish bones also can be clearly shown
- External HD screen, high identification of fish bones



Single Beam X-Ray Inspection System for Bottles, Jars and Cans (Inclined Downward)

Single beam X-Ray inspection system with software specifically tailored to inspect objects in all regions of cans, tins and bottles

- Adjustable inspection range based on different dimensions of cans and bottles
- It can achieve the inspection of filling levels
- It can achieve better performance for contaminants sinking at the bottom part of the cans and bottles



Model	TXR-2080F	TXR-4080F
X-Ray Tube	350W	
Inspection Width	200mm	400mm
Inspection Height	100mm	100mm
Best Inspection Sensitivity (Without Product)	Stainless steel ball Φ0.3mm Stainless steel wire Φ0.2*2mm (Auto Alarm) Glass/Ceramic ball Φ0.8mm	
Conveyor Speed	5-39 m/min	
O/S	Windows	
Protection Mode	Protection tunnel	
X-Ray Leakage	< 1 μSv/h	
IP Rate	IP66 (Under belt)/IP69K	
Working Environment	Temperature: -10~40 ℃	
	Humidity:30~90%, no dew	
Cooling Method	Industrial air conditioning	
Rejecter Mode	Sound and light alarm, belt stop (Rejecter optional)	
Air Pressure	0.8Mpa	
Power Supply	3kW	
Main Material	SUS304	
Surface Treatment	Mirror polished/Sand blasted	

Note:

The technical parameter above namely is the result of sensitivity by inspecting only the test sample on the belt. The actual sensitivity would be affected according to the products being inspected.

Model	TXR-1630SO
X-Ray Tube	350W/480W Optional
Max Detecting Width	160mm
Max Detecting Height	280mm
Best Inspection Ability	Stainless steel ball Φ0.5mm Stainless steel wire Φ0.3*2mm Glass/Ceramic ball Φ1.5mm
Conveyor Speed	10-120m/min
O/S	Windows
Protection Method	Protective tunnel
X-Ray Leakage	< 0.5 μSv/h
IP Rate	IP65
Working Environment	Temperature: -10~40 ℃
	Humidity:30~90%, no dew
Cooling Method	Industrial air conditioning
Rejecter Mode	Push rejecter /Piano key rejecter (optional)
Air Pressure	0.8Mpa
Power Supply	3.5kW
Main Material	SUS304
Surface Treatment	Mirror polished/Sand blasted

Note:

The technical parameter above namely is the result of sensitivity by inspecting only the test sample on the belt. The actual sensitivity would be affected according to the products being inspected.



Single Beam X-Ray Inspection System for Bottles, Jars and Cans (Inclined Upward)

With special design, suitable for bottles or jars in standing conditions.

- Strong X-Ray power, suitable for inspection of jars, bottles, etc.
- High capacity, competitive price



Split Triple Beam X-Ray Inspection System for Bottles, Jars and Cans

Foreign matter detection for cans, bottles and other containers. Equipped with the self-developed "Smart Supercomputing" intelligent algorithm, it has an excellent detection effect on foreign matter detection on irregular bottle bodies, bottle bottoms, screw openings, tinplate can pull rings, and flanges.

Model	TXR-1630SH
X-Ray Tube	350W/480W Optional
Max Detecting Width	160mm
Max Detecting Height	260mm
Best Inspection Ability	Stainless steel ball Φ0.5mm Stainless steel wire Φ0.3*2mm Glass/Ceramic ball Φ1.5mm
Conveyor Speed	10-120m/min
O/S	Windows
Protection Method	Protective tunnel
X-Ray Leakage	< 0.5 μSv/h
IP Rate	IP65
Working Environment	Temperature: -10~40°C
	Humidity:30~90%, no dew
Cooling Method	Industrial air conditioning
Rejecter Mode	Push rejecter /Piano key rejecter (optional)
Air Pressure	0.8Mpa
Power Supply	3.5kW
Main Material	SUS304
Surface Treatment	Mirror polished/Sand blasted

Note:

The technical parameter above namely is the result of sensitivity by inspecting only the test sample on the belt. The actual sensitivity would be affected according to the products being inspected.

Model	TXR-JSU3-16
X-Ray Tube	350W/480W Optional
Max Detecting Width	160mm
Max Detecting Height	260mm
Best Inspection Ability	Stainless steel ball Φ0.5mm Stainless steel wire Φ0.3*2mm Glass/Ceramic ball Φ1.5mm
Conveyor Speed	10-120m/min
O/S	Windows
Protection Method	Protective tunnel
X-Ray Leakage	< 0.5 μSv/h
IP Rate	IP65
Working Environment	Temperature: -10~40°C
	Humidity:30~90%, no dew
Cooling Method	Industrial air conditioning
Rejecter Mode	Push rejecter /Piano key rejecter (optional)
Air Pressure	0.8Mpa
Power Supply	3.5kW
Main Material	SUS304
Surface Treatment	Mirror polished/Sand blasted

Note:

The technical parameter above namely is the result of sensitivity by inspecting only the test sample on the belt. The actual sensitivity would be affected according to the products being inspected.

Dual-beam X-Ray Inspection System for Bottles, Jars and Cans



Dual-beam X-Ray inspection system with software specifically tailored to inspect objects in all regions of cans, tins and bottles.

- It can achieve inspection in double visual angles and avoid missing inspection of blind area
- It can achieve better inspection ratio for irregular fragments
- Intelligent zoning to ensure optimal sensitivity for different areas

Model	TXR-2080BDX
X-Ray Tube	350W/480W Optional
Inspection Width	160mm
Inspection Height	260mm
Best Inspection Sensitivity	Stainless steel ball Φ0.5mm Stainless steel wire Φ0.3*2mm Glass/Ceramic ball Φ1.5mm
Conveyor Speed	10-120m/min
O/S	Windows
Protection Method	Protective tunnel
X-Ray Leakage	< 0.5 μSv/h
IP Rate	IP65
Working Environment	Temperature: -10~40 ℃
	Humidity:30~90%, no dew
Cooling Method	Industrial air conditioning
Rejecter Mode	Push rejecter /Piano key rejecter (optional)
Air Pressure	0.8Mpa
Power Supply	4kW
Main Material	SUS304
Surface Treatment	Mirror polished/Sand blasted

Note:

The technical parameter above namely is the result of sensitivity by inspecting only the test sample on the belt. The actual sensitivity would be affected according to the products being inspected.

Triple-beam X-Ray Inspection System for Bottles, Jars and Cans



The most reliable X-Ray inspection system with "adjustable point of view" on 3 X-Ray beams for any kind of jars, bottles, tins, etc.

- Three X-Ray Beams ensure high detection accuracy
- Three X-Ray Beams avoid inspection blind area

Model	TXR-20250
X-Ray Tube	350W/480W Optional
Inspection Width	160mm
Inspection Height	260mm
Best Inspection Sensitivity	Stainless steel ball Φ0.5mm Stainless steel wire Φ0.3*2mm Glass/Ceramic ball Φ1.5mm
Conveyor Speed	10-120m/min
O/S	Windows
Protection Method	Protective tunnel
X-Ray Leakage	< 0.5 μSv/h
IP Rate	IP65
Working Environment	Temperature: -10~40 ℃
	Humidity:30~90%, no dew
Cooling Method	Industrial air conditioning
Rejecter Mode	Push rejecter /Piano key rejecter (optional)
Air Pressure	0.8Mpa
Power Supply	4.5kW
Main Material	SUS304
Surface Treatment	Mirror polished/Sand blasted

Note:

The technical parameter above namely is the result of sensitivity by inspecting only the test sample on the belt. The actual sensitivity would be affected according to the products being inspected.

Quad Beam X-Ray Inspection System for Bottles, Jars and Cans



For products in upright cans, bottles, boxes, etc., it can conduct all-round detection of foreign objects in the product and the liquid level of the product in the can.

Intelligent partition detection and shielding detection algorithm, together with multi-beam multi-view structure design, truly realize all-round detection inside the container.

Model	TXR-1626-JDU4	TXR-1626-JDM4
X-Ray Tube	350W/480W Optional	
Inspection Width	160mm	
Inspection Height	260mm	
Best Inspection Sensitivity	Stainless steel ball Φ0.5mm Stainless steel wire Φ0.3*2mm Glass/Ceramic ball Φ1.5mm	
Conveyor Speed	10-120m/min	
O/S	Windows	
Protection Method	Protective tunnel	
X-Ray Leakage	< 0.5 μSv/h	
IP Rate	IP65	
Working Environment	Temperature: -10~40 ℃	
	Humidity:30~90%, no dew	
Cooling Method	Industrial air conditioning	
Rejecter Mode	Push rejecter /Plano key rejecter (optional)	
Air Pressure	0.8Mpa	
Power Supply	4.5kW	
Main Material	SUS304	
Surface Treatment	Mirror polished/Sand blasted	

Note:

The technical parameter above namely is the result of sensitivity by inspecting only the test sample on the belt. The actual sensitivity would be affected according to the products being inspected.

Five Beam X-Ray Inspection System for Bottles, Jars and Cans



Mainly used in high-speed production lines where more than four inspection-views are recommended. Low following costs thanks to split-beam technology.

Model	TXR-1626-JTM5
X-Ray Tube	480W
Inspection Width	160mm
Inspection Height	260mm
Best Inspection Sensitivity	Stainless steel ball φ0.3mm Stainless steel wire Φ0.2*2mm Glass/Ceramic ball φ1.0mm
Conveyor Speed	10~120m/min
O/S	Windows
Protection Method	Sides: Occlusive Protective Tunnel
X-Ray Leakage	< 1 μSv/h
IP Rate	IP65
Working Environment	Temperature:0~40℃
	Humidity: 30-90% , no dew
Cooling Method	Industrial air conditioning
Rejecter Mode	High Speed Push Bar
Air Pressure	0.8 Mpa
Power Supply	4.5 kW
Main Material	SUS 304
Surface Treatment	Mirror polished/Sand blasted

Note:

The technical parameter above namely is the result of sensitivity by inspecting only the test sample on the belt. The actual sensitivity would be affected according to the products being inspected.

X-Ray Inspection System for Sauce and Liquid

Easy to be integrated in existing sealed pipe system, this type of X-Ray inspection system is suitable for the pump pressure fluid and semi-fluid product like sauce, liquid, etc.



Model	TXR-2480Pi
X-Ray Tube	210W
Pipe Diameter	50mm, 63mm, 80mm
Best Inspection Sensitivity	Stainless steel ball Φ0.3mm Stainless steel wire Φ0.3*2mm Glass/Ceramic ball Φ1.0mm
O/S	Windows
X-Ray Leakage	< 1 μSv/h (CE Standard)
IP Rate	IP66 (For tunnel)
Working Environment	Temperature: -10~40 C
	Humidity:0~90%, no dew
Cooling Method	Industrial air conditioning
Air Pressure	0.8MPa
Power Supply	2.5kW
Main Material	SUS304
Surface Treatment	Mirror polished/Sand blasted

Note:
The technical parameter above namely is the result of sensitivity by inspecting only the test sample on the belt. The actual sensitivity would be affected according to the products being inspected.

Vision Inspection System

Vision Inspection Systems detect misprints, missing characters, wrong labels, barcodes, black spots, surface blemishes, and foreign objects to ensure product quality.



AI Algorithm



Camera



Lens



Light Source

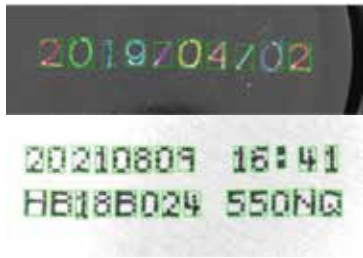
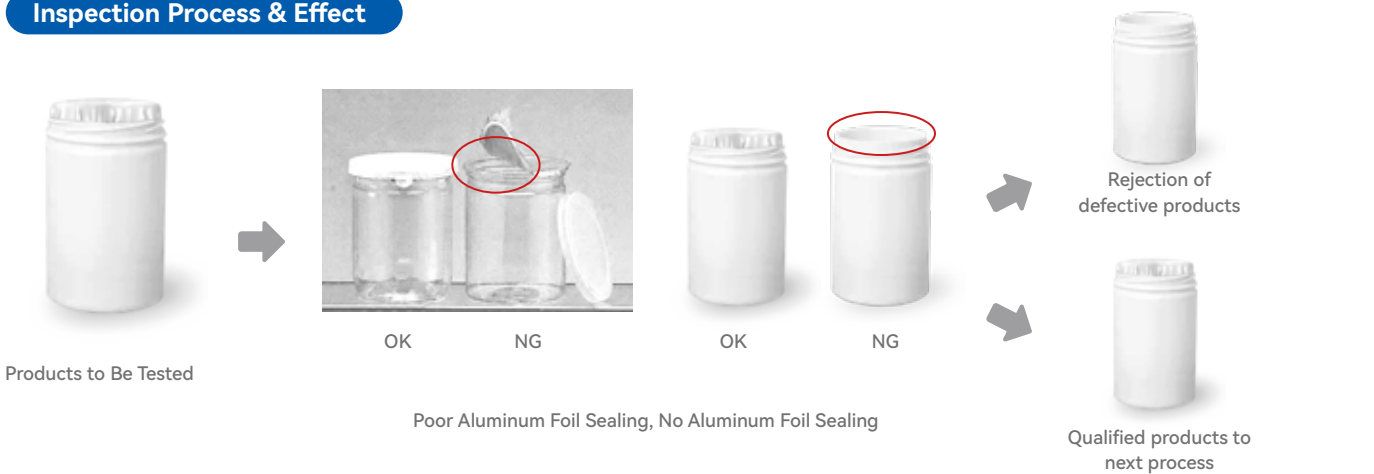
Vision Inspection System

Vision Inspection Systems offer complete inspection solutions to safeguard product quality and safety. They detect misprints, missing or misplaced characters, labeling errors, barcode defects, surface imperfections, black spots, blemishes, hair, and other foreign objects. With options for single-side and multi-side inspection, Vision Inspection Systems provide flexible quality control, helping manufacturers reduce errors, prevent contamination, and deliver reliable products to the market.

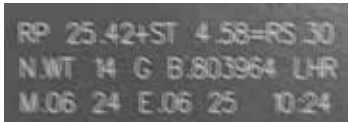
Features

- Detects misprints, missing or misplaced characters, and incorrect labeling.
- Identifies barcode errors to ensure accurate product information.
- Finds surface defects such as black spots, blemishes, and imperfections.
- Detects foreign objects including hair and other contaminants.
- Supports single-side, double-side, or multi-side inspection for full coverage.

Inspection Process & Effect



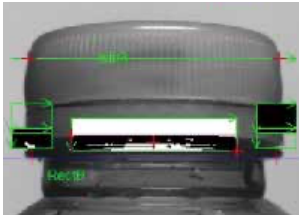
Packaging Inkjet Coding Inspection



Products with Unqualified Packaging Inkjet Coding



Liquid Level Detection for Bottled Products



High Deviation Cap Detection for Bottled Products

Inkjet Character Defect Detection System

Widely used for inspecting characters, labels, and barcodes on packaged products, such as omissions, misprints, and incorrect positioning.



Specification		
Vision Inspection Series	TVS-G1	TVS-G2
Typical Applications	Inkjet presence, inkjet position, production date recognition, label presence, label position, label type recognition, 1D/2D code reading	
Detection Accuracy	0.5mm	
Detection Rate	99.90%	
False Detection Rate	0.10%	
Detection Range	Up to 100mm x 100mm	
Camera	Color area scan industrial camera	
Lens	High-definition fixed-focus lens	
Light Source	High-brightness LED	
Multi-Camera Expansion	Up to 4 cameras	
Multi-Light Source Expansion	Up to 4 light sources	
Applicable Products	Flat outer packaging	
Speed	Up to 70m/min	
Throughput	600 pieces/min	300 pieces/min
Display	15" full-color touchscreen	12" full-color touchscreen
Operating System	Windows 10	
Operation Language	Multilingual (Chinese, English, etc.)	
Alarm Method	Audible and visual alarm	
Data Interface	LAN port, USB port	
Product Management	Complete product log	
Operating Environment	0-40°C, 30-85% RH, non-condensing	
Material	Stainless steel	
Power Supply	Single-phase AC, 220V±10%, 50/60Hz	
Dimensions (mm)	1060L x 730W x 1350H	380L x 292W x 605H

Notes:
1. The above parameters are measured under room temperature conditions of 25°C, and specific indicators may vary depending on the environment, materials, and impurity content.
2. The above model is a standard sample machine. If there are any updates to the product, no further notice will be given, and the actual machine shall prevail.

Double/Multi-Sided Vision Inspection System

Widely used for inspecting characters, labels, barcodes, and defects on all sides of packaged products, such as misprints, missing characters, incorrect positioning, black spots, hair, and surface blemishes.



Specification	
Vision Inspection Series	TVS-G1-ZL2
Main Functions	Detect product defects, appearance, black spots, hair, other foreign objects
Typical Applications	Inkjet defects, product appearance defects, surface flaws, foreign object detection
Performance Metrics	Varies by product conditions
Detection Range	Standard 400mm width
Lens	High-definition fixed-focus lens
Light Source	High-brightness LED
Multi-Camera Expansion	Up to 2 cameras
Multi-Light Source Expansion	Up to 4 light sources
Applicable Products	Product surface defect detection
Max Speed	70m/min
Display	TFT 15" full-color touchscreen
Operating System	Windows 7
Operation Language	Multilingual (Chinese, English, etc.)
Alarm Method	Audible and visual alarm
Data Interface	LAN port, USB port
Product Management	Complete product log
Operating Environment	0~40°C, 30~85% RH, non-condensing
Material	Stainless steel
Power Supply	Single-phase AC, 220V±10%, 50/60Hz

Notes:

1. The above parameters are measured under room temperature conditions of 25°C, and specific indicators may vary depending on the environment, materials, and impurity content.

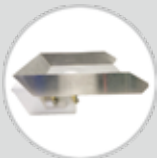
2. The above model is a standard sample machine. If there are any updates to the product, no further notice will be given, and the actual machine shall prevail.

Optical Sorting System

The Optic Sorting System is a device for automatically sorting out the defective material by using the optoelectronic detecting technology according to the difference of the optical characteristics of the materials.



Camera Lens



Feeder



Solenoid valve



Filter Set



Display Screen



Lighting System

Optical Sorting System

Food optical sorters are machines that use advanced imaging technology to inspect and separate food products based on their color, shape, size and appearance features.

Chute Color Sorter: A system where food passes through a chute, and sensors detect color differences to reject defective or unwanted items.

Belt AI Optical Sorter: A more advanced system where food items move along a belt while AI-powered cameras analyze them, identifying defects and sorting based on multiple attributes such as color, size, shape, appearance, features, etc.

Features and Advantages

AI-Powered Sorting System

Delivers enhanced accuracy through intelligent recognition and classification.

Ultra-High-Definition Cameras

Enables precise detection of micro-defects, hair, fine strings, and other tiny impurities.

Multiple Viewing Configurations

From top single view to multi-view (up to 360°) imaging, ensuring thorough inspection even in hard-to-reach areas.

High-Efficiency Material Handling

Belt speeds up to 180 m/min, with options for double-layer conveyors and two-stage sorting for higher output.

Food-Grade Hygienic Design

Fully welded stainless steel body, with waterproof and dustproof rating up to IP69K, suitable for dry, wet, and frozen material environments, with reliable operation in high-dust and wet environments.

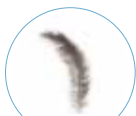
Hygienic & Easy Maintenance Design

Belt quick-release mechanism for fast cleaning and reduced downtime.

Rejected Impurities



Hair



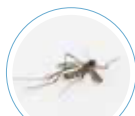
Feather



Thin paper



String



Insect corpse



Leaves



Ties



Wooden pole



Metal



Stones



Rat droppings



PET



Straw



Glass



Plastic piece



Desiccant



Withered grass



Seed stone



Rubber band



Cocklebur



Ceramics

UHD Intelligent Medium Speed Belt Optical Sorter



Widely used for dehydrated vegetables, clean vegetables, frozen vegetables, aquatic products, puffed foods, fragile nut kernels (such as walnuts kernels, almond kernels, cashew kernels, pine nut kernels, etc.)

Specification			
Model	TCS-600VB-LSW	TCS-900VB-LSW	TCS-1200VB-LSW
Belt Width	600mm	900mm	1200mm
Channel Number	2*63	3*63	4*63
Machine Speed	96m/min		
Power Consumption	2.5kW	3.2kW	4.0kW
Air Consumption	≤1.2 m³/min	≤1.8 m³/min	≤2.4 m³/min
Operation	15" LCD Screen		
UHD Camera	1024*1024, 2048*2048		
Processor Configuration	25× faster processing than vertical model with PC + high-speed GPU/board chip		
Network Communication	4G (Wireless,Wired)		
Air Source Pressure	0.6 ~ 0.8MPa		
Body Material	SUS304		
Surface Dealing	Brushed Stainless Steel		
Cooling Method	Air Conditioned Cooling		
Environmental, electrical, operating specifications			
Operating Temperature	0-40℃		
Relative Humidity	30-90%		
Power Supply	220V, AC, 50/60Hz		

Notes:

- 1. The above parameters are measured under room temperature conditions of 25°C, and specific indicators may vary depending on the environment, materials, and impurity content.
- 2. The above model is a standard sample machine. If there are any updates to the product, no further notice will be given, and the actual machine shall prevail.

UHD Intelligent Multi Beam Belt Optical Sorter

Suitable for vegetables (lettuce, green beans, corn, cucumbers, peppers, potatoes etc), fruits (strawberries, tomatoes, mango, cherries, blueberries, etc.), meatballs, seafood, nuts etc.



Specification			
Model	TCS-600VC-BSW	TCS-1200VC-BSW	TCS-1800VC-BSW
Belt Width	600mm	1200mm	1800mm
Channel Number	2*63	4*63	6*63
Machine Speed	240m/min		
Power Consumption	9.5kW	11.3kW	13kW
Air Consumption	≤1.2 m³/min	≤2.4 m³/min	≤3.2 m³/min
Operation	15" LCD Screen		
UHD Camera	2048*2048		
Processor Configuration	25× faster processing than vertical model with PC + high-speed GPU/board chip		
Network Communication	4G (Wireless,Wired)		
Air Source Pressure	0.6 ~ 0.8MPa		
Body Material	SUS304		
Surface Dealing	Brushed Stainless Steel		
Cooling Method	Air Conditioned Cooling		
Environmental, electrical, operating specifications			
Operating Temperature	-10-40℃		
Relative Humidity	30-90%		
Power Supply	380V, AC, 50/60Hz		

- Notes:
1. The above parameters are measured under room temperature conditions of 25℃, and specific indicators may vary depending on the environment, materials, and impurity content.
 2. The above model is a standard sample machine. If there are any updates to the product, no further notice will be given, and the actual machine shall prevail.

UHD Intelligent Long Distance Belt Optical Sorter

Widely used for materials such as beans, nuts, seeds, vegetables, fruits, herbs, chili pepper.



Specification			
Model	TCS-600LB	TCS-1200LB	TCS-1800LB
Belt Width	600mm	1200mm	1800mm
Channel Number	2*63	4*63	6*63
Machine Speed	180m/min		
Power Consumption	2.5kW	4.0kW	4.8kW
Air Consumption	≤1.2 m³/min	≤2.4 m³/min	≤3.2 m³/min
Operation	15" LCD Screen		
UHD Camera	1024*1024, 2048*2048		
Processor Configuration	25× faster processing than vertical model with PC + high-speed GPU/board chip		
Network Communication	4G (Wireless,Wired)		
Air Source Pressure	0.6 ~ 0.8MPa		
Body Material	SUS304		
Surface Dealing	Brushed Stainless Steel		
Cooling Method	Air Conditioned Cooling		
Environmental, electrical, operating specifications			
Operating Temperature	0-40℃		
Relative Humidity	30-90%		
Power Supply	220V, AC, 50/60Hz		

- Notes:
1. The above parameters are measured under room temperature conditions of 25℃, and specific indicators may vary depending on the environment, materials, and impurity content.
 2. The above model is a standard sample machine. If there are any updates to the product, no further notice will be given, and the actual machine shall prevail.



Double Layer Intelligent UHD Long Distance Belt Optical Sorter

Widely used for materials such as beans, nuts, seeds, vegetables, fruits, herbs, chili pepper.

Specification			
Model	TCS-600LB-BDS	TCS-1200LB-BDS	TCS-1800LB-BDS
Belt Width	600mm	1200mm	1800mm
Channel Number	4*63	8*63	12*63
Machine Speed	180m/min		
Power Consumption	4.0kW	6.7kW	8.8kW
Air Consumption	≤2.4 m³/min	≤4.5 m³/min	≤6.0 m³/min
Operation	15" LCD Screen		
UHD Camera	1024*1024, 2048*2048		
Processor Configuration	25× faster processing than vertical model with PC + high-speed GPU/board chip		
Network Communication	4G (Wireless,Wired)		
Air Source Pressure	0.6 ~ 0.8MPa		
Body Material	SUS304		
Surface Dealing	Brushed Stainless Steel		
Cooling Method	Air Conditioned Cooling		
Environmental, electrical, operating specifications			
Operating Temperature	0-40℃		
Relative Humidity	30-90%		
Power Supply	220V, AC, 50/60Hz		

Notes:
1. The above parameters are measured under room temperature conditions of 25℃, and specific indicators may vary depending on the environment, materials, and impurity content.
2. The above model is a standard sample machine. If there are any updates to the product, no further notice will be given, and the actual machine shall prevail.



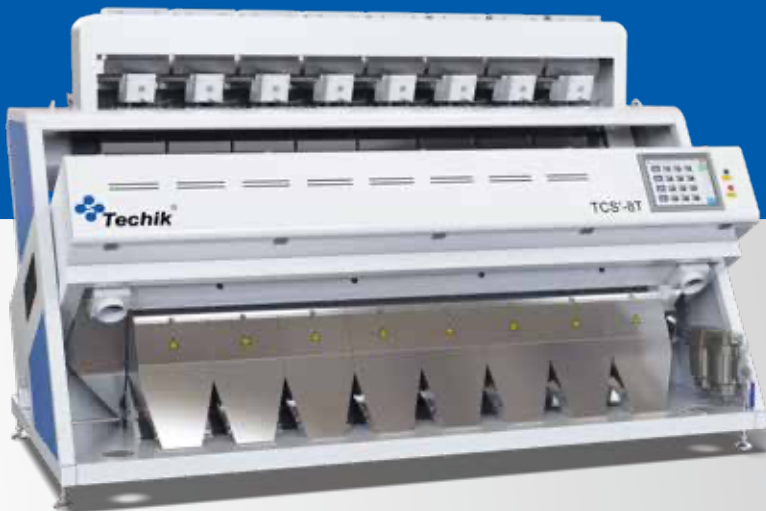
UHD Intelligent Top View Belt Optical Sorter

Widely used for nuts, tea, frozen vegetables, fruits, seafood, chili, dehydrated green onions, garlic, carrots etc.

Specification			
Model	TCS-600VA-BSW	TCS-1200VA-BSW	TCS-1800VA-BSW
Belt Width	600mm	1200mm	1800mm
Channel Number	2*63	4*63	6*63
Machine Speed	80m/min		
Power Consumption	2.5kW	4.0kW	4.8kW
Air Consumption	≤1.2 m³/min	≤2.4 m³/min	≤3.2 m³/min
Operation	15" LCD Screen		
UHD Camera	1024*1024, 2048*2048		
Processor Configuration	GPU+CPU processing speed is more than 25 times faster than ordinary vertical color sorter		
Network Communication	4G (Wireless,Wired)		
Air Source Pressure	0.6 ~ 0.8MPa		
Body Material	SUS304		
Surface Dealing	Brushed Stainless Steel		
Cooling Method	Air Conditioned Cooling		
Environmental, electrical, operating specifications			
Operating Temperature	0-40℃		
Relative Humidity	30-90%		
Power Supply	220V, AC, 50/60Hz		

Notes:
1. The above parameters are measured under room temperature conditions of 25℃, and specific indicators may vary depending on the environment, materials, and impurity content.
2. The above model is a standard sample machine. If there are any updates to the product, no further notice will be given, and the actual machine shall prevail.

Multi Functional Chute Optical Sorter



Widely used for materials such as rice, beans, nuts, seeds and plastics. It is mainly used to detect and remove impurities with different color.

Specification										
Model	TCS-1T	TCS-2T	TCS-3T	TCS-4T	TCS-5T	TCS-6T	TCS-7T	TCS-8T	TCS-10T	TCS-12T
Channel Number	1*63	2*63	3*63	4*63	5*63	6*63	7*63	8*63	10*63	12*63
Power Consumption	1.0kW	1.5kW	2.0kW	2.5kW	3.0kW	3.4kW	3.8kW	4.2kW	4.8kW	5.5kW
Air Consumption	≤0.8 m³/min	≤1.2 m³/min	≤1.8 m³/min	≤2.4 m³/min	≤2.8 m³/min	≤3.2 m³/min	≤3.8 m³/min	≤4.2 m³/min	≤5.0 m³/min	≤6.0 m³/min
Air Source Pressure	0.6 ~ 0.8MPa									
Operation	15" LCD Screen									
Network Communication	4G (Wireless,Wired)									
Camera	2048									
Valve	High-pressure Low-pulse Width Spray Valve System									
Valve Service Life	>15 billion times									
LED Service Life	>100000h									
Body Material	Carbon Steel / Stainless Steel									
Environmental, electrical, operating specifications										
Operating Temperature	0-40℃									
Power Supply	220V, AC, 50/60Hz									

- Notes:
- 1. The above parameters are measured under room temperature conditions of 25°C, and specific indicators may vary depending on the environment, materials, and impurity content.
 - 2. The above model is a standard sample machine. If there are any updates to the product, no further notice will be given, and the actual machine shall prevail.

Mini Chute Optical Sorter



The mini sorter is tailor-made for small seeds processors, coffee roasters, scientific research institutes, universities, labs, etc.

It has small footprint and is mobile! With the combination of color & shape sorting, it is able to recognize shells, split and broken commodities.

Specification	
Model	TCS-1T-MI
Channel Number	1*32
Power Consumption	0.6KW
Air Consumption	≤0.5m³/min
Air Source Pressure	0.6~0.8MPa
Operation	10" LCD Screen
Network Communication	4G (Wireless, Wired)
Camera	1024
Valve	High-pressure Low-pulse Width Spray Valve System
Valve Service Life	>15 billion times
LED Service Life	>100000h
Body Material	Carbon Steel /Stainless Steel
Environmental, electrical, operating specifications	
Operating Temperature	10-40°C
Power Supply	220V, AC, 50/60Hz

- Notes:
- 1. The above parameters are measured under room temperature conditions of 25°C, and specific indicators may vary depending on the environment, materials, and impurity content.
 - 2. The above model is a standard sample machine. If there are any updates to the product, no further notice will be given, and the actual machine shall prevail.

Farm Products Optical Sorter

Top View Belt Optical Sorter

Widely used for small particles, powdery, and flat products such as tea, dehydrated vegetables, meat floss, date granules, sugar, peppercorns, chili powder, parsley powder, etc.

Specification			
Model	TCS-600VA	TCS-1200VA	TCS-1800VA
Belt Width	600mm	1200mm	1800mm
Channel Number	2*63	4*63	6*63
Machine Speed	90m/min		
Air Consumption	≤1.2 m³/min	≤4.0 m³/min	≤4.8 m³/min



Rice Chute Optical Sorter

Transparent, plastic and non-metallic particles and particles of different colors, sizes, shapes and even physical properties can be sorted. Infrared sensor has been widely used in color sorting when there is material overlap.

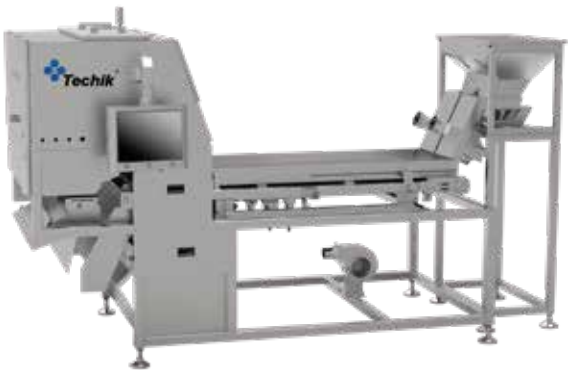
Specification						
Model	TCS-5T	TCS-6T	TCS-7T	TCS-8T	TCS-10T	TCS-12T
Channel Number	5*63	6*63	7*63	8*63	10*63	12*63
Power Consumption	3.0kW	3.4kW	3.8kW	4.2kW	4.8kW	5.5kW
Air Consumption	≤2.8m³/min	≤3.2m³/min	≤3.8m³/min	≤4.2m³/min	≤5.0m³/min	≤6.0m³/min



Composite Infrared & Vision Belt Optical Sorter

Widely used in industries such as vegetables, nuts, kernels, and traditional Chinese medicine—for example, walnuts, pumpkin seeds, raisins, and coffee beans—for applications like walnut kernel separation, pumpkin seed kernel separation, raisin stem sorting, and stone removal from coffee beans.

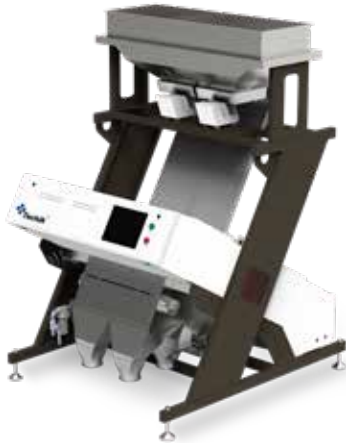
Specification	
Model	TCS-600DB-B
Belt Width	600mm
Channel Number	2*63
Machine Speed	180m/min
Air Consumption	≤1.2 m³/min



Compact Chute Optical Sorter

Small size, small space occupation, 5400 pixel camera, strong applicability for occasions with low output.

Specification				
Model	TCS-GS1T	TCS-GS1T	TCS-GS2T	TCS-GS3T
Channel Number	1*63	1*80	2*63	3*63
Power Consumption	1.0kW	1.2kW	1.5kW	2.0kW
Air Consumption	≤0.8m³/min	≤0.9m³/min	≤1.2m³/min	≤1.8m³/min



Rejecter Series



Flipper Type

To reject the products detected to different directions by 1~2 arm levers, which is suitable for the boxed, bag products.

Air Jet Type

To reject the products detected by using the blowing air, which is suitable for the high-speed sorting of the small and light weight products.

Push Type

To reject the products detected by pushing lever, which is suitable for small and large packing products.

Pneumatic Retracting Band Type

To reject the products by two active baffles, which is suitable for the small packed and non-packed products.

Heavy Push Rejecter

To reject products by pushing lever, especially suitable for the product with big size and heavy weight.

Drop Out Rejecter

To reject the products detected by partial belt flap, which is suitable for packed and non-packed products.

Flap Rejecter

To reject the products detected by the active flap, which is suitable for the dry products in bulk.